

Queensland Road Crash Weekly Report

Report No: 1053

Data Extracted: 12 Mar 2018

Fatalities: Year to Date to Sunday, 11 March 2018

Table 1: Comparative Queensland Road Toll

	2013	2014	2015	2016	2017	2018	Variation in 2018 from 2017		Variation in 2018 from the 2013 to 2017 Avg	
	Year to Date to 11 March						no.	%	no.*	%
Total fatal crashes	58	36	33	46	45	41	-4	-8.9%	-3	-6.0%
Total fatalities	65	38	36	47	47	44	-3	-6.4%	-3	-5.6%
Driver fatalities	33	18	14	21	18	17	-1	-5.6%	-4	-18.3%
Passenger fatalities	15	9	8	7	10	9	-1	-10.0%	-1	-8.2%
Motorcycle/Moped rider and pillion fatalities	12	8	12	10	12	10	-2	-16.7%	-1	-7.4%
Bicycle rider and pillion fatalities	2	1	0	3	1	0	-1	-100.0%	-1	-100.0%
Pedestrian fatalities	3	2	2	6	6	8	2	33.3%	4	110.5%
Other fatalities [^]	0	0	0	0	0	0	0	-	0	-
Fatalities involving heavy freight vehicles ^{^^}	11	9	9	8	6	8	2	33.3%	-1	-7.0%

Note:

Figures are preliminary.

** Figures are rounded to the nearest whole number.*

[^] Includes other fatalities such as horse riders and train drivers and passengers.

^{^^} Includes all fatalities as a result of crashes involving heavy freight vehicles. These figures are also included in the road user type breakdown above (e.g. drivers, passengers, etc).

During 1 January to 11 March 2018, there were 44 fatalities as a result of crashes within Queensland, which is three fatalities (or 6.4%) fewer than the same period for the previous year and three fatalities (or 5.6%) fewer than the previous five year average for the same period (Table 1).

Figure 1: Cumulative Daily Road Toll, Queensland

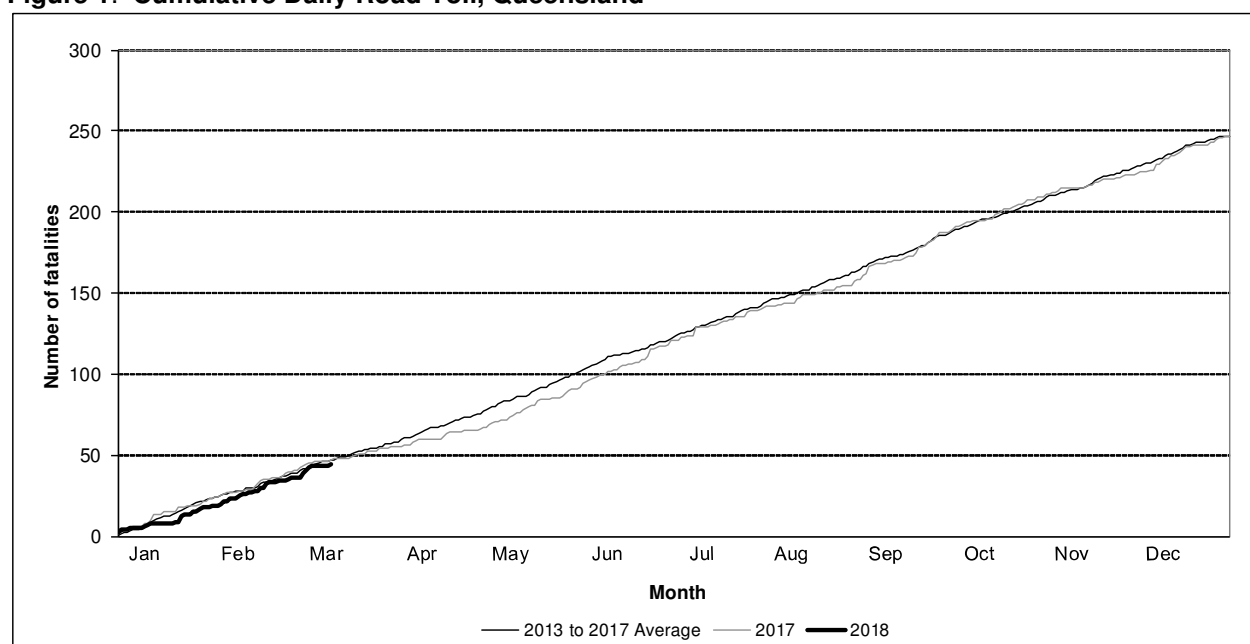


Table 2: Fatalities by Police Region

Police Region	2013	2014	2015	2016	2017	2018	Variation in 2018 from 2017		Variation in 2018 from the 2013 to 2017 Avg	
	Year to Date to 11 March						no.	%	no.*	%
Northern	6	7	10	6	7	7	0	0.0%	0	-2.8%
Central	27	6	13	15	13	12	-1	-7.7%	-3	-18.9%
Southern	19	17	7	15	10	9	-1	-10.0%	-5	-33.8%
South Eastern	7	6	4	2	12	9	-3	-25.0%	3	45.2%
Brisbane	6	2	2	9	5	7	2	40.0%	2	45.8%

Note:

Figures are preliminary.

Where Police Region was known.

* Figures are rounded to the nearest whole number.

Table 3: Fatalities by TMR Customer Services Branch Region

Transport and Main Roads Customer Services Branch Region	2013	2014	2015	2016	2017	2018	Variation in 2018 from 2017		Variation in 2018 from the 2013 to 2017 Avg	
	Year to Date to 11 March						no.	%	no.*	%
Central	14	2	5	5	6	4	-2	-33.3%	-2	-37.5%
Northern	5	7	10	6	7	7	0	0.0%	0	0.0%
SEQ North	16	3	10	10	11	3	-8	-72.7%	-7	-70.0%
SEQ South	18	11	6	8	15	17	2	13.3%	5	46.6%
Southern	12	15	5	18	8	13	5	62.5%	1	12.1%

Note:

Figures are preliminary.

Where CSB Region was known.

* Figures are rounded to the nearest whole number.

Table 4: Fatalities by TMR Program Delivery and Operations Region

Transport and Main Roads Program Delivery and Operations Region	2013	2014	2015	2016	2017	2018	Variation in 2018 from 2017		Variation in 2018 from the 2013 to 2017 Avg	
	Year to Date to 11 March						no.	%	no.*	%
North Queensland	5	7	10	6	7	7	0	0.0%	0	0.0%
Central Queensland	14	2	5	5	6	4	-2	-33.3%	-2	-37.5%
North Coast and Wide Bay/Burnett	21	6	12	18	15	11	-4	-26.7%	-3	-23.6%
Downs South West	9	13	3	7	2	4	2	100.0%	-3	-41.2%
Metropolitan	7	4	2	8	5	9	4	80.0%	4	73.1%
South Coast	9	6	4	3	12	9	-3	-25.0%	2	32.4%

Note

Figures are preliminary.

Where PDO Region was known.

* Figures are rounded to the nearest whole number.

Fatalities: 1 January 2011 to 31 December 2016 and Year to Date to 30 November 2017

Table 5: Fatalities by characteristic

Behaviour / Characteristic: Fatalities as a result of crashes	2011	2012	2013	2014	2015	2016	Variation in 2016 from 2015	Variation in 2016 from the 2011 to 2015 Avg	Year to Date to 30 November 2017
1 January 2011 to 31 December 2016 and Year to Date to 30 November 2017	no.	no.	no.	no.	no.	no. %	no. %	no.* %	no. %
All fatalities	269	280	271	223	243	251 -	8 3.3%	-6 -2.4%	223 -
Involving speeding drivers/riders	48	59	47	65	62	64 25.5%	2 3.2%	8 13.9%	43 19.3%
Involving drink drivers/riders	56	45	64	43	57	46 18.3%	-11 -19.3%	-7 -13.2%	57 25.6%
Fatigue related crashes (involving drivers/riders)	41	48	41	31	28	33 13.1%	5 17.9%	-5 -12.7%	22 9.9%
Involving young adult drivers/riders, aged 16 to 24 years	79	84	70	55	53	61 24.3%	8 15.1%	-7 -10.6%	59 26.5%
Involving young adult drivers/riders, aged 16 years	6	8	1	0	0	1 0.4%	1 -	-2 -66.7%	1 0.4%
Involving young adult drivers/riders, aged 17 to 20 years	38	52	39	31	29	20 8.0%	-9 -31.0%	-18 -47.1%	23 10.3%
Involving young adult drivers/riders, aged 21 to 24 years	35	32	30	25	25	42 16.7%	17 68.0%	13 42.9%	37 16.6%
Involving senior adult drivers/riders, aged 60 to 74 years	40	54	41	35	36	47 18.7%	11 30.6%	6 14.1%	53 23.8%
Involving senior adult drivers/riders, aged 75 years or over	17	17	25	11	31	26 10.4%	-5 -16.1%	6 28.7%	22 9.9%
Involving learner drivers/riders	6	22	11	2	3	4 1.6%	1 33.3%	-5 -54.5%	8 3.6%
Involving provisional/P1/P2 drivers/riders	44	47	35	25	28	37 14.7%	9 32.1%	1 3.4%	24 10.8%
Involving unlicensed drivers/riders	26	31	22	31	30	24 9.6%	-6 -20.0%	-4 -14.3%	19 8.5%
Involving heavy freight vehicles	54	73	53	41	49	40 15.9%	-9 -18.4%	-14 -25.9%	31 13.9%
Involving motorcycles (excluding mopeds)	44	59	42	37	54	64 25.5%	10 18.5%	17 35.6%	45 20.2%
Involving mopeds	2	1	3	0	0	0 0.0%	0 -	-1 -100.0%	1 0.4%
Involving buses	8	7	6	1	2	3 1.2%	1 50.0%	-2 -37.5%	10 4.5%
Child road user fatalities, aged 16 years or younger [^]	29	15	24	13	8	8 3.2%	0 0.0%	-10 -55.1%	6 2.7%
Young adult road user fatalities, aged 17 to 24 years [^]	49	60	51	42	39	45 17.9%	6 15.4%	-3 -6.6%	37 16.6%
Mature adult road user fatalities, aged 25 to 59 years [^]	140	146	139	119	135	132 52.6%	-3 -2.2%	-4 -2.8%	116 52.0%
Senior adult road user fatalities, aged 60 to 74 years [^]	31	35	30	35	26	29 11.6%	3 11.5%	-2 -7.6%	31 13.9%
Senior adult road user fatalities, aged 75 years or over [^]	20	24	27	14	35	37 14.7%	2 5.7%	13 54.2%	33 14.8%
Vehicle occupant fatalities	181	183	192	158	164	144 -	-20 -12.2%	-32 -18.0%	135 -
Vehicle occupant fatalities, where restraint use was known	112	110	122	102	128	117 -	-11 -8.6%	2 1.9%	108 -
Unrestrained vehicle occupant fatalities [#]	33	23	35	36	35	18 15.4%	- -43.7%#	- -45.5%#	28 25.9%

Note:

Figures are preliminary.

* Figures are rounded to the nearest whole number.

[^] Where age was known.

[#] Restraint use is not applicable for all road user types (i.e. pedestrians, motorcycle riders/pillions, etc) and is not always known. Therefore the variation in unrestrained vehicle occupant casualties is measured as a change in the percentage of all vehicle occupant casualties, instead of the change in number, where restraint use was known.

Fatalities per 100,000 population: 12 months to 28 February 2018

Table 6: Fatalities per 100,000 population, by state

State	March 2016 to February 2017			March 2017 to February 2018			Percentage difference in rate with previous 12 month period
	Fatalities	Population ('000) as at Aug 2016	Fatalities per 100,000 population	Fatalities	Population ('000) as at Aug 2017	Fatalities per 100,000 population	
Queensland	251	4,861.2	5.16	242	4,942.4	4.90	-5.2%
New South Wales	370	7,761.6	4.77	416	7,876.7	5.28	10.8%
Victoria	271	6,200.8	4.37	260	6,345.7	4.10	-6.2%
South Australia	84	1,715.1	4.90	100	1,725.3	5.80	18.3%
Western Australia	188	2,563.1	7.34	161	2,583.3	6.23	-15.0%
Tasmania	32	518.1	6.18	41	521.4	7.86	27.3%
Northern Territory	45	245.9	18.30	31	246.9	12.56	-31.4%
Australian Capital Territory	13	404.8	3.21	6	411.1	1.46	-54.6%
Rest of Australia	1,003	19,413.9	5.17	1,015	19,714.8	5.15	-0.3%
Australian Total	1,254	24,275.1	5.17	1,257	24,657.2	5.10	-1.3%

Data source:

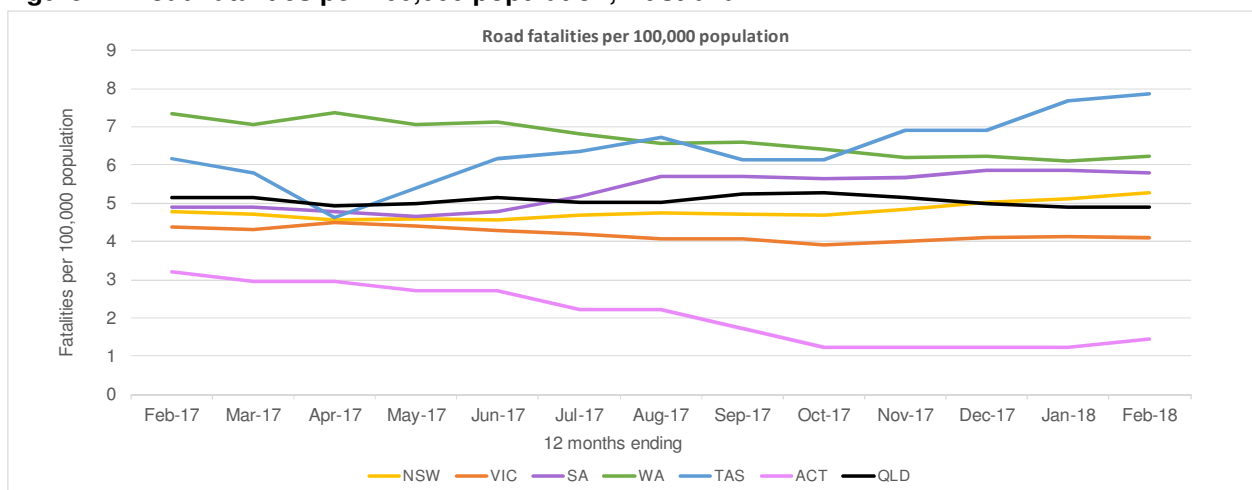
Population: Australian Bureau of Statistics - Catalog 3101.0

Interstate fatalities: Relevant State Authority

Note:

Figures are preliminary

Figure 2: Road fatalities per 100,000 population, Australia



For the 12 month period, 1 March 2017 to 28 February 2018:

- There were 242 fatalities within Queensland, which is nine fatalities (or 3.6%) fewer than the previous 12 month period (251).
- The road fatality rate for Queensland was 4.90 fatalities per 100,000 population which is 5.2% lower than the previous 12 month period (5.16) and is third behind the Australian Capital Territory (1.46) and Victoria (4.10).
- There were 1,257 fatalities within Australia, which is three fatalities (or 0.2%) greater than the previous 12 month period (1,254).
- The road fatality rate for Australia was 5.10 fatalities per 100,000 population which is 1.3% lower than the previous 12 month period (5.17).

Hospitalised Casualties: Year to Date to Thursday, 31 August 2017

Table 7: Comparative Queensland Hospitalised Casualties

	2012	2013	2014	2015	2016	2017	Variation in 2017 from 2016		Variation in 2017 from the 2012 to 2016 Avg	
	Year to Date to 31 August						no.	%	no.*	%
Total hospitalisation crashes	3,610	3,768	3,688	3,438	3,418	3,414	-4	-0.1%	-170	-4.8%
Total hospitalised casualties	4,411	4,568	4,509	4,214	4,170	4,219	49	1.2%	-155	-3.6%
Driver hospitalised casualties	2,425	2,539	2,482	2,249	2,289	2,276	-13	-0.6%	-121	-5.0%
Passenger hospitalised casualties	865	881	875	789	779	788	9	1.2%	-50	-5.9%
Motorcycle/Moped rider and pillion hospitalised casualties	616	643	660	686	612	636	24	3.9%	-7	-1.2%
Bicycle rider and pillion hospitalised casualties	231	255	237	217	214	269	55	25.7%	38	16.6%
Pedestrian hospitalised casualties	273	250	238	261	265	241	-24	-9.1%	-16	-6.4%
Other hospitalised casualties [^]	1	0	17	12	11	9	-2	-18.2%	1	9.8%
Hospitalised casualties involving heavy freight vehicles ^{^^}	311	359	310	284	264	286	22	8.3%	-20	-6.4%

Note:

Figures are preliminary.

* Figures are rounded to the nearest whole number.

[^] Includes other hospitalised casualties such as horse riders and train drivers and passengers.

^{^^} Includes all hospitalised casualties as a result of crashes involving heavy freight vehicles. These figures are also included in the road user type breakdown above (e.g. drivers, passengers, etc).

During 1 January to 31 August 2017, there were 4,219 hospitalised casualties as a result of crashes within Queensland, which is 49 hospitalised casualties (or 1.2%) greater than the same period for the previous year and 155 hospitalised casualties (or 3.6%) fewer than the previous five year average for the same period (Table 7).

Figure 3: Cumulative Daily Hospitalised Casualties, Queensland

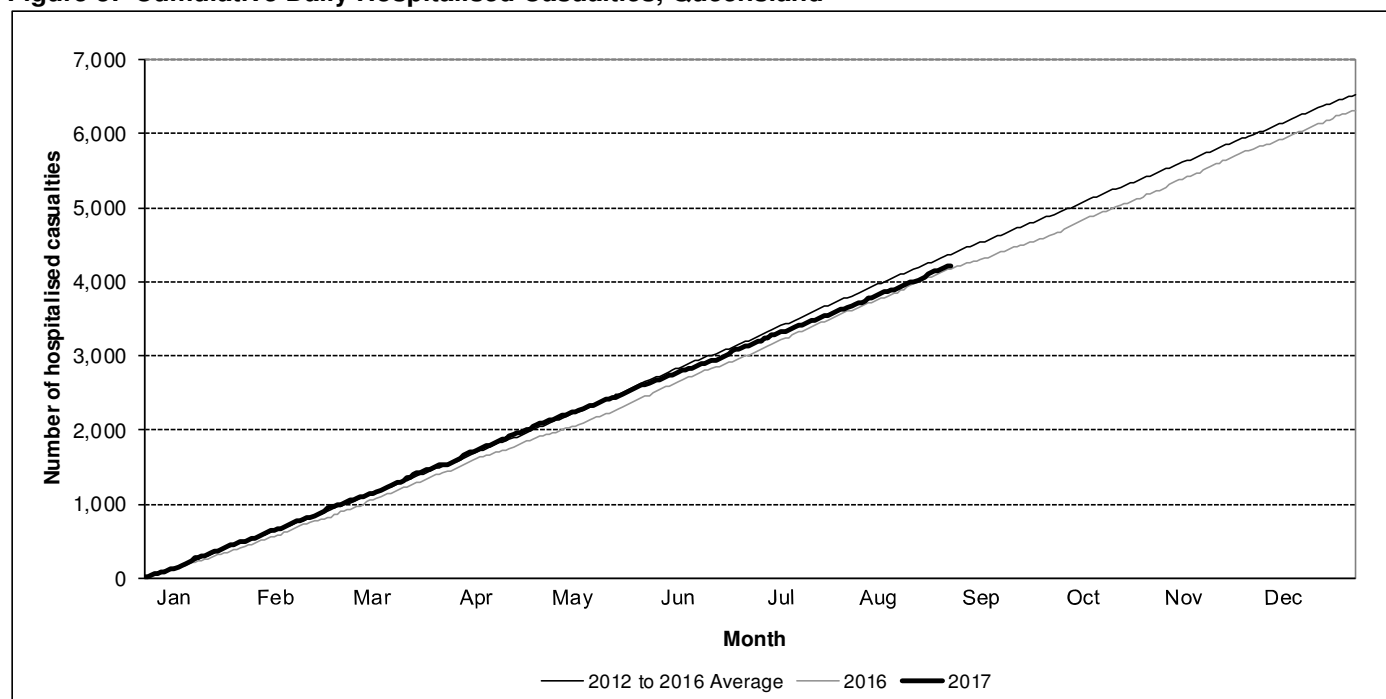


Table 8: Hospitalised Casualties by Police Region

Police Region	2012	2013	2014	2015	2016	2017	Variation in 2017 from 2016		Variation in 2017 from the 2012 to 2016 Avg	
	Year to Date to 31 August						no.	%	no.*	%
Northern	572	616	597	579	531	582	51	9.6%	3	0.5%
Central	1,015	1,122	1,077	950	1,051	948	-103	-9.8%	-95	-9.1%
Southern	889	805	895	848	745	797	52	7.0%	-39	-4.7%
South Eastern	688	758	756	713	760	823	63	8.3%	88	12.0%
Brisbane	1,240	1,256	1,183	1,123	1,083	1,067	-16	-1.5%	-110	-9.3%

Note:

Figures are preliminary.

Where Police Region was known.

* Figures are rounded to the nearest whole number.

Table 9: Hospitalised Casualties by TMR Customer Services Branch Region

Transport and Main Roads Customer Services Branch Region	2012	2013	2014	2015	2016	2017	Variation in 2017 from 2016		Variation in 2017 from the 2012 to 2016 Avg	
	Year to Date to 31 August						no.	%	no.*	%
Central	521	575	521	428	514	434	-80	-15.6%	-78	-15.2%
Northern	565	612	595	577	531	580	49	9.2%	4	0.7%
SEQ North	1,239	1,192	1,213	1,078	1,058	1,041	-17	-1.6%	-115	-9.9%
SEQ South	1,468	1,544	1,531	1,538	1,484	1,573	89	6.0%	60	4.0%
Southern	611	634	648	592	583	589	6	1.0%	-25	-4.0%

Note:

Figures are preliminary.

Where CSB Region was known.

* Figures are rounded to the nearest whole number.

Table 10: Hospitalised Casualties by TMR Program Delivery and Operations Region

Transport and Main Roads Program Delivery and Operations Region	2012	2013	2014	2015	2016	2017	Variation in 2017 from 2016		Variation in 2017 from the 2012 to 2016 Avg	
	Year to Date to 31 August						no.	%	no.*	%
North Queensland	565	612	595	577	531	580	49	9.2%	4	0.7%
Central Queensland	521	575	521	428	514	434	-80	-15.6%	-78	-15.2%
North Coast and Wide Bay/Burnett	984	1,021	1,083	947	939	956	17	1.8%	-39	-3.9%
Downs South West	357	330	355	337	306	297	-9	-2.9%	-40	-11.9%
Metropolitan	1,272	1,255	1,186	1,201	1,112	1,107	-5	-0.4%	-98	-8.1%
South Coast	705	764	768	723	768	843	75	9.8%	97	13.1%

Note

Figures are preliminary.

Where PDO Region was known.

* Figures are rounded to the nearest whole number.

Hospitalised Casualties: 1 January 2011 to 31 December 2016 and Year to Date to 31 August 2017

Table 11: Hospitalised Casualties by Characteristic

Behaviour / Characteristic: Hospitalised casualties as a result of crashes	2011	2012	2013	2014	2015	2016		Variation in 2016 from 2015		Variation in 2016 from the 2011 to 2015 Avg		Year to Date to 31 August 2017	
1 January 2011 to 31 December 2016 and Year to Date to 31 August 2017	no.	no.	no.	no.	no.	no.	%	no.	%	no.*	%	no.	%
All hospitalised casualties	6,388	6,553	6,936	6,625	6,167	6,315	-	148	2.4%	-219	-3.3%	4,219	-
Involving speeding drivers/riders	276	344	295	322	301	269	4.3%	-32	-10.6%	-39	-12.5%	184	4.4%
Involving drink drivers/riders	629	586	576	552	477	515	8.2%	38	8.0%	-49	-8.7%	416	9.9%
Fatigue related crashes (involving drivers/riders)	467	522	478	544	444	440	7.0%	-4	-0.9%	-51	-10.4%	230	5.5%
Involving young adult drivers/riders, aged 16 to 24 years	2,209	2,233	2,366	2,186	1,962	2,080	32.9%	118	6.0%	-111	-5.1%	1,319	31.3%
Involving young adult drivers/riders, aged 16 years	62	52	52	35	43	50	0.8%	7	16.3%	1	2.5%	34	0.8%
Involving young adult drivers/riders, aged 17 to 20 years	1,196	1,216	1,271	1,146	1,065	1,115	17.7%	50	4.7%	-64	-5.4%	663	15.7%
Involving young adult drivers/riders, aged 21 to 24 years	1,074	1,082	1,134	1,129	937	1,018	16.1%	81	8.6%	-53	-5.0%	680	16.1%
Involving senior adult drivers/riders, aged 60 to 74 years	1,012	1,117	1,180	1,171	1,129	1,149	18.2%	20	1.8%	27	2.4%	776	18.4%
Involving senior adult drivers/riders, aged 75 years or over	420	374	407	378	390	419	6.6%	29	7.4%	25	6.4%	291	6.9%
Involving learner drivers/riders	257	279	230	175	177	184	2.9%	7	4.0%	-40	-17.7%	123	2.9%
Involving provisional/P1/P2 drivers/riders	1,207	1,257	1,392	1,188	1,190	1,217	19.3%	27	2.3%	-30	-2.4%	780	18.5%
Involving unlicensed drivers/riders	416	449	408	673	479	443	7.0%	-36	-7.5%	-42	-8.7%	296	7.0%
Involving heavy freight vehicles	508	459	514	448	413	416	6.6%	3	0.7%	-52	-11.2%	286	6.8%
Involving motorcycles (excluding mopeds)	794	890	931	932	964	965	15.3%	1	0.1%	63	7.0%	626	14.8%
Involving mopeds	52	65	80	79	42	46	0.7%	4	9.5%	-18	-27.7%	37	0.9%
Involving buses	138	129	130	148	122	116	1.8%	-6	-4.9%	-17	-13.0%	98	2.3%
Child road user hospitalised casualties, aged 16 years or younger^	514	421	468	465	482	431	6.8%	-51	-10.6%	-39	-8.3%	335	8.0%
Young adult road user hospitalised casualties, aged 17 to 24 years^	1,536	1,576	1,647	1,552	1,333	1,403	22.3%	70	5.3%	-126	-8.2%	894	21.3%
Mature adult road user hospitalised casualties, aged 25 to 59 years^	3,410	3,546	3,762	3,576	3,343	3,437	54.6%	94	2.8%	-90	-2.6%	2,293	54.5%
Senior adult road user hospitalised casualties, aged 60 to 74 years^	608	700	738	718	684	719	11.4%	35	5.1%	29	4.3%	464	11.0%
Senior adult road user hospitalised casualties, aged 75 years or over^	298	295	304	298	308	309	4.9%	1	0.3%	8	2.8%	220	5.2%
Vehicle occupant hospitalised casualties	4,857	4,886	5,215	4,915	4,506	4,621	-	115	2.6%	-255	-5.2%	3,064	-
Vehicle occupant hospitalised casualties, where restraint use was known	3,886	3,866	4,074	4,037	3,792	3,795	-	3	0.1%	-136	-3.5%	2,506	-
Unrestrained vehicle occupant hospitalised casualties#	167	170	155	166	152	178	4.7%	-	17.0%#	-	13.8%#	123	4.9%

Note:

Figures are preliminary.